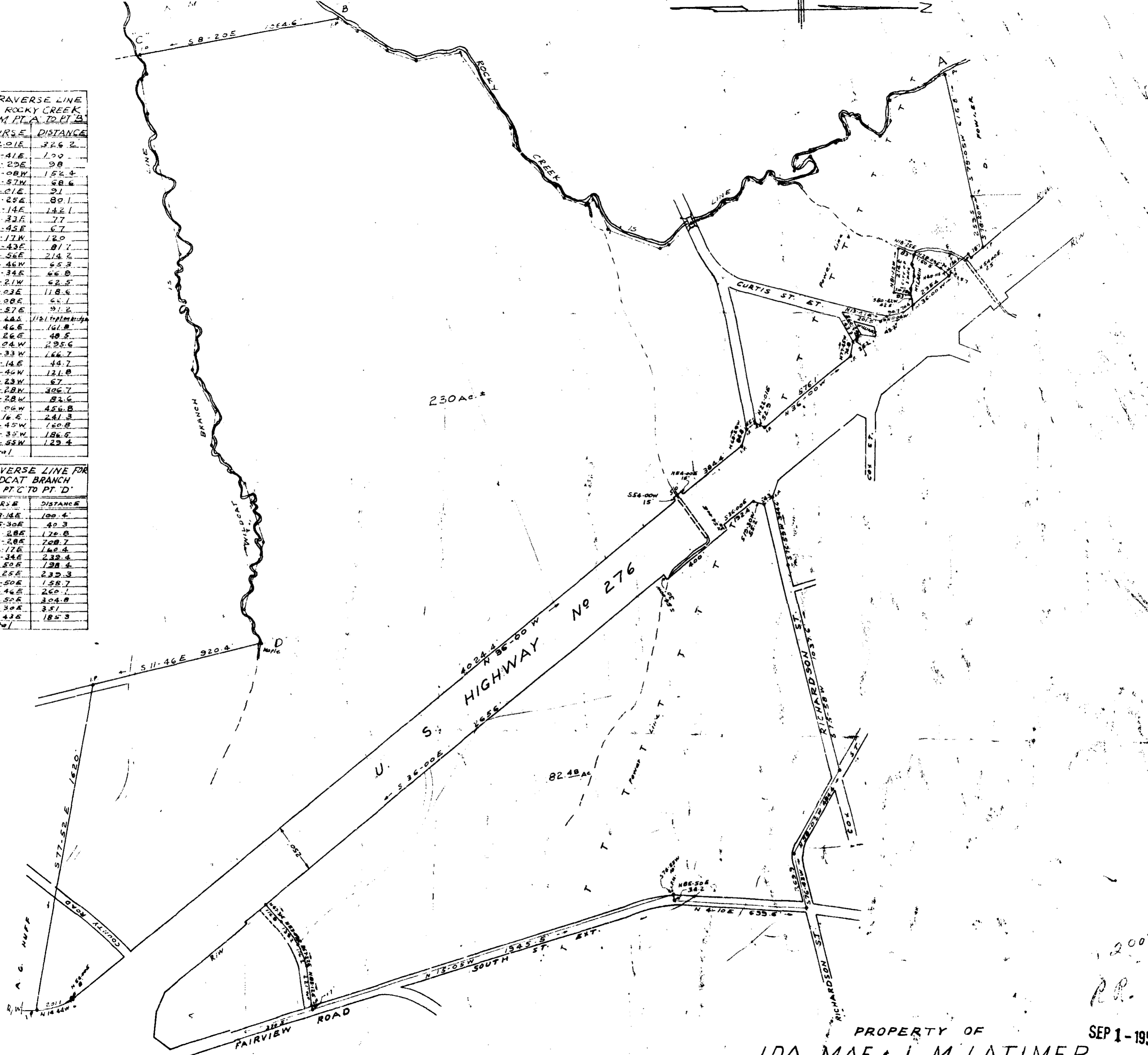


TRAVERSE LINE  
FOR ROCKY CREEK  
FROM PT. A TO PT. B

COURSE	DISTANCE
S 22.01E	326.2
N 81.41E	1.00
S 52.29E	98
S 38.08W	152.4
S 7.57W	68.6
N 72.21E	21
S 32.25E	89.1
S 12.14E	142.1
S 30.33E	77
S 69.45E	67
N 37.17W	120
N 67.43E	81.7
S 14.56E	214.2
S 44.46W	65.3
S 40.34E	66.9
S 18.21W	62.5
S 55.03E	118.6
S 13.08E	65.1
S 40.57E	91.2
S 18.44E	112.1 (topography)
S 40.46E	161.8
S 16.26E	48.5
S 19.04W	295.6
S 62.33W	166.7
S 75.14E	44.7
S 15.44W	121.0
S 53.23W	67
S 44.28W	306.7
S 81.28W	82.6
S 56.06W	456.8
S 8.14E	241.3
S 18.45W	160.8
S 32.35W	186.5
S 30.55W	129.4
Total	

TRAVERSE LINE FOR  
WILDCAT BRANCH  
FROM PT. C TO PT. D

COURSE	DISTANCE
N 68.14E	100.4
S 45.30E	40.3
N 81.28E	176.8
N 77.28E	708.7
S 82.17E	160.4
N 64.34E	232.4
S 81.50E	128.4
N 60.25E	232.3
S 79.50E	158.7
N 46.46E	260.1
N 72.50E	304.0
S 71.30E	25.1
N 61.43E	185.3
Total	



PROPERTY OF  
IDA MAE & J. M. LATIMER

NEAR SIMPSONVILLE S. C.

SCALE 1" = 300'

JUNE 1959

SEP 1 - 1959

7133

200  
P.R. 1